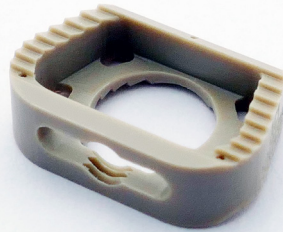




C3

Spacevision

Anterior Cervical Interbody Fusion

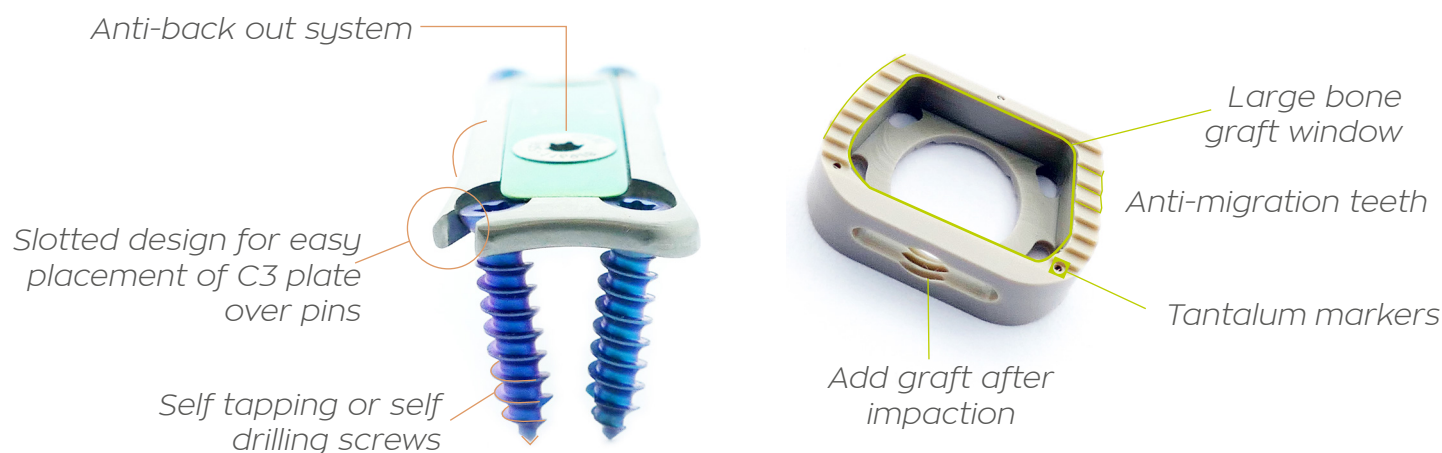


Unique bone graft compression control

C3® PLATE & SPACEVISION™ ACIF FEATURES & BENEFITS

User-friendly instrumentation & perfect fusion control :

- Precise control of distraction-compression*
- ACIF with 5° lordosis and convex anatomical shape
- Easy fusion assessment with PEEK-OPTIMA® radiolucency



*Maintenance of graft compression in the adult cervical spine (Bolger et al. 2006, Eurospine J.)



Choose either fixed or variable angle screws for a dynamic compression or a stiff construct:

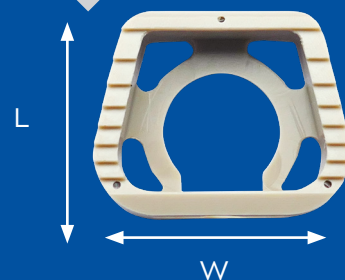
- Rigid with only fixed angle screws
- Hybrid construct with both types of screws
- Dynamic compression with only variable angle screws

Comprehensive range of plates:

- 1 & 2 level plates from 21,5 to 56,5 mm - 2,5 mm increments
- 3 & 4 level plates from 54 to 109 mm - 3 mm increments
- Ref. : C1 - PXXXXX
- X : 1, 2, 3 or 4 level XXXX : Length (ex : 0565 for 56,5mm)

Large choice of screws for plate fixation:

- Fixed angle screws Ø 4mm : 12/14/16 mm (C1-C40XX)
 - Variable angle screws Ø 4mm : 12/14/16/18/20 mm (C1-S40XX)
 - Self drilling screws Ø 4mm : 12/14/16 mm (C1-SD40XX)
 - Revision surgery screws Ø 4,5mm : 12/14/16 mm (C1-R45XX)
 - XX : screw length
- 3 Footprints : L12 x W15 / L12 x W17 / L14 x W17 mm
- Height 5mm to 9mm - 1mm increments
- Ref : AC1-CWW-HH-LL
- Ex : AC1-C17-08-12

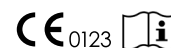


Distributed by



SPINEVISION
10 Rue de la Renaissance
92160 ANTONY - FRANCE
Phone : +33 1 53 33 25 25

www.spinevision.net



See package insert
for labeling limitation

Non contractual document
GC1-AC1-L_02GB